

OUTDOOR HERMETIC CONDENSING UNIT

CONTENTS

01 FEATURES

02 MODEL INSTRUCTIONS

03 PRODUCTS

PART .01

FEATURES

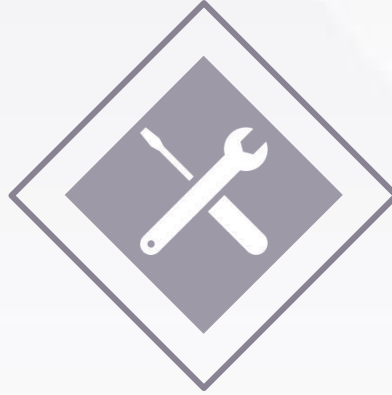


FEATURES



Less Energy Consumption

- 1.Specialized high efficiency scroll compressor for fresh food
- 2.Microprocessor control system, start/stop control more accurate, reduce over-low operating, increasing operating efficiency
- 3.Optimized condenser efficiency, increasing COP



Easy Operating and Maintenance

- 1.Wide evaporating temperature range: +10°C ~-40 °C
- 2.Easy installation, rainproof not required
- 3.Less bolts connection, less leakage probability
- 4.External tube connection design, easy installation



Reliable Performance

- 1.High quality specialized scroll compressor
- 2.Complete safety protection devices
- 3.Complete Valves configuration
- 4.More brazing and less bolts, reduce leakage ratio



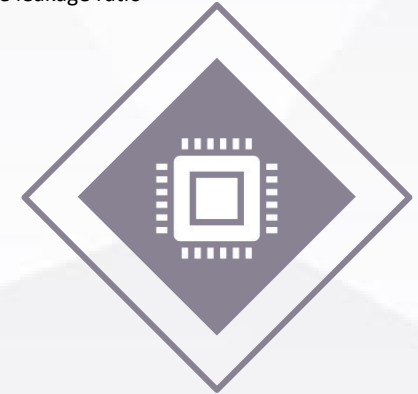
Lower Noise

- 1.Optimized fan design, noise level below 58 dB
- 2.Optimized compressor design, less annoying high-frequency noise



High Ambient Temperature Applicable

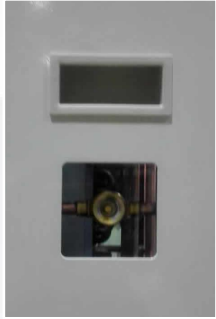
- 1.Optimized fin and coil design, increasing heat efficiency
- 2.Optimized fan design, reducing noise, increasing cooling air volume



Microprocessor Control

- 1.More accurate, more efficient
- 2.Operating parameters, alarm and error code dynamic display
- 3.Monitoring tatus, history and alarm through App on phone

MODEL INSTRUCTIONS



Equipped with sight glass for liquid level for easy commissioning



Changing tube connection method from bolts to welding, reducing leakage caused by bolts thread.



Extending fin space to 2.0 mm
Optimizing fin structure to reduce wind resistance



Optimizing fan design to reduce noise level



Adopting microprocessor control board
Equipped with sight glass for error code observation easily

A photograph of a person's hands writing on a document with a pen. The image is overlaid with a semi-transparent dark blue filter. The text "PART .02" is centered over the image, flanked by two horizontal white lines.

PART .02

MODEL INSTRUCTIONS

A white outline of a document or page, positioned to the right of the "MODEL INSTRUCTIONS" text.

MODEL INSTRUCTIONS

OCU – N R 30 0 D S F – J

1 2 3 4 5 6 7 8 9

1	Application	OCU: Air-cooled outdoor unit	
2	Refrigerant	N	R404A/R507/R448/R449
		N/A	R22
3		S	Panasonic scroll compressor
		R	Vertical rolling rotor compressor
4	Output Power	10~Y	
5	Development Code	0~9	
6	Type of control	N/A	Constant frequency control
		D	DC frequency control
		V	AC frequency control
		Q	Enhanced vapor injection type
7	Temperature	L	Low temperature
		S	Medium & low temperature
		H	Hight temperature
8	Type	F: Air-Cooled Condensing Unit	
9	Power Supply	N/A	3 Phase
		D	1 Phase



UF – N RH 11 6 0 S F J

1 2 3 4 5 6 7 8 9

1	Application	UF: Air-cooled indoor unit	
2	Refrigerant	N	R404A/R507/R448/R449
		N/A	R22
3	Type of Compressor	RH	Horizontal rolling rotor compressor
		R	Vertical rolling rotor compressor
		S	Scroll compressor
4	Output Power	8	750W
		11	1100W
		15	1500W
		22	2200W
5	Power Supply	N/A	3 Phase, 380V
		3	3 Phase, 200V
		6	1 Phase, 220V
		8	3 Phase, 380V
6	Development Code	0~9	
7	Temperature	L	Low temperature
		S	Medium & low temperature
		H	Hight temperature
8	Type	F: One section	
9	Origin	J: DALAIN	

PART .03

PRODUCTS



PRODUCTS

Outdoor Condensing Unit Line-up



Condensing Unit
Built-in Series, 1~1.5 HP
Temp. Range -40~+10°C



Condensing Unit
Fixed Frequency Series, 2~4 HP
Temp. Range -40~+10°C



Condensing Unit
Fixed Frequency Series, 5~7 HP
Temp. Range -40~+10°C



Condensing Unit
Fixed Frequency Series, 8 HP
Temp. Range -40~+10°C



Condensing Unit
Outdoor Micro-Channel Series, 3, 4.5, 6 HP
Temp. Range -40~+5°C



Condensing Unit
VFD Series, 3 HP
Temp. Range -40~+5°C



Condensing Unit
VFD Series, 4.5, 6 HP
Temp. Range -40~+5°C



Condensing Unit
VFD Series, 3 HP
Temp. Range -40~+5°C

Notes: 1. Specification will be changed without notice.

2. Please contact us for the latest

PRODUCTS



Single Fan
Medium Temp. Scroll Unit



MODEL		★ OCU-NS350HF	★ OCU-NS400HF	★ OCU-S350HF	★ OCU-S400HF	
Nominal Output		2.63 kW	3.0 kW	2.63 kW	3.0 kW	
Range of Ambient Temp.		-25 ~ +48°C	-25 ~ +48°C	-25 ~ +48°C	-25 ~ +48°C	
Range of Evaporating Temp.		-15 ~ +10°C	-15 ~ +10°C	-15 ~ +10°C	-15 ~ +10°C	
Compressor	Type	Air-cooled	Air-cooled	Liquid Injection	Liquid Injection	
	Lubrication Oil	FV68S 1.7L	FV68S 1.7L	SAY-56T 1.7L	SAY-56T 1.7L	
	Crankcase Heating	220V 35W	220V 35W	220V 35W	220V 35W	
Condenser	Structure	Finned Tube	Finned Tube	Finned Tube	Finned Tube	
	Fan	Power	220V/70W	220V/70W	220V/70W	220V/70W
		Diameter	460 mm	460 mm	460 mm	460 mm
		Qty.	1	1	1	1
Liquid Receiver Volume		3 L	3 L	3 L	3 L	
Suction Accumulator Volume		-	-	-	-	
Safety Protection Devices	Anti-phase	Yes	Yes	Yes	Yes	
	Pressure Switch	2.6 MPa	2.6 MPa	2.6 MPa	2.6 MPa	
	Discharge Temp.	130 °C	130 °C	130 °C	130 °C	
	Over Current	7.5 A	7.5 A	7.5 A	7.5 A	
	Fan Overload	135 °C	135 °C	135 °C	135 °C	
	Fuse	5 A	5 A	5 A	5 A	
	Motor Temp.	145 °C	145 °C	145 °C	145 °C	
Connections	Gas Inlet	19.05 mm	19.05 mm	19.05 mm	19.05 mm	
	Liquid Outlet	9.53 mm	9.53 mm	9.53 mm	9.53 mm	
Weight		101 kg	103 kg	101 kg	103 kg	
Noise		54 dB	54 dB	54 dB	54 dB	

PRODUCTS



Medium Temp.
Constant Frequency 8 HP



MODEL		★ OCU-NS800HF	★ OCU-S800HF	
Nominal Output		6 kW	6 kW	
Range of Ambient Temp.		-25 ~ +48°C	-25 ~ +48°C	
Range of Evaporating Temp.		-15 ~ +10°C	-15 ~ +10°C	
Compressor	Type	Air-cooled	Liquid Injection	
	Lubrication Oil	FV68S 2.8L	SAY-56T 2.8L	
	Crankcase Heating	220V 44W x 2	220V 44W x2	
Condenser	Structure	Finned Tube	Finned Tube	
	Fan	Power	380V/60W	380V/60W
		Diameter	500 mm	500 mm
		Qty.	2	2
Liquid Receiver Volume		16 L	16 L	
Suction Accumulator Volume		3.8 L	3.8 L	
Safety Protection Devices	Anti-phase	Yes	Yes	
	Pressure Switch	2.7 Mpa	2.7 MPa	
	Discharge Temp.	130 °C	130 °C	
	Over Current	24 A	24 A	
	Fan Overload	135 °C	135 °C	
	Fuse	5 A	5 A	
	Motor Temp.	-	-	
Connections	Gas Inlet	28.58 mm	28.58 mm	
	Liquid Outlet	15.88 mm	15.88 mm	
Weight		238 kg	238 kg	
Noise		62 dB	62 dB	

PRODUCTS



Single Phase
Medium & Low Temp. Rolling Rotor Unit



MODEL		★ OCU-NR200SF-D	★ OCU-NR300SF-D	
Nominal Output		1.5 kW	2.2 Kw	
Range of Ambient Temp.		-25 ~ +48°C	-25 ~ +48°C	
Range of Evaporating Temp.		-40 ~ -5°C	-40 ~ -5°C	
Compressor	Type	Liquid Injection	Liquid Injection	
	Lubrication Oil	FV68S 0.9L	FV68S 0.9L	
	Crankcase Heating	240V 28W	240V 28W	
Condenser	Structure	Finned Tube	Finned Tube	
	Fan	Power	220V/70W	220V/70W
		Diameter	460 mm	460 mm
		Qty.	1	1
Liquid Receiver Volume		3 L	3 L	
Suction Accumulator Volume		2 L	2 L	
Safety Protection Devices	Anti-phase	-	-	
	Pressure Switch	2.78 MPa	2.78 Mpa	
	Discharge Temp.	130 °C	130 °C	
	Over Current	13 A	24 A	
	Fan Overload	135 °C	135 °C	
	Fuse	5 A	5 A	
	Motor Temp.	-	-	
Connections	Gas Inlet	15.88 mm	15.88 mm	
	Liquid Outlet	9.53 mm	9.53 mm	
Weight		95 kg	97 kg	
Noise		54.98 dB	57.59 dB	

PRODUCTS



Single Fan
Medium & Low Temp. Rolling Rotor Unit



MODEL		★ OCU-NR300SF	★ OCU-R300SF	
Nominal Output		2.2 Kw	2.2 kw	
Range of Ambient Temp.		-25 ~ +48°C	-25 ~ +48°C	
Range of Evaporating Temp.		-40 ~ -°C	-40 ~ -5°C	
Compressor	Type	Liquid Injection	Liquid Injection	
	Lubrication Oil	FV68S 0.9L	3gsd-T 0.9L	
	Crankcase Heating	240V 25W	240V 25W	
Condenser	Structure	Finned Tube	Finned Tube	
	Fan	Power	220V/70W	220V/70W
		Diameter	460 mm	460 mm
		Qty.	1	1
Liquid Receiver Volume		3 L	3 L	
Suction Accumulator Volume		2 L	2 L	
Safety Protection Devices	Anti-phase	Yes	Yes	
	Pressure Switch	2.78 Mpa	2.6 Mpa	
	Discharge Temp.	130 °C	130 °C	
	Over Current	5.5 A	5.5 A	
	Fan Overload	135 °C	135 °C	
	Fuse	5 A	5 A	
	Motor Temp.	Yes	Yes	
Connections	Gas Inlet	15.88 mm	15.88 mm	
	Liquid Outlet	9.53 mm	9.53 mm	
Weight		95 kg	95 kg	
Noise		54 dB	54 dB	

PRODUCTS



Single Fan
Low Temp. Scroll Unit



MODEL		★ OCU-NS400HF	★ OCU-NS400QSF	★ OCU-S400HF	★ OCU-S400QSF	
Nominal Output		3.0 kW	3.0 kW	3.0 kW	3.0 kW	
Range of Ambient Temp.		-25 ~ +48°C	-25 ~ +48°C	-25 ~ +48°C	-25 ~ +48°C	
Range of Evaporating Temp.		-40 ~ -15°C	-40 ~ -15°C	-40 ~ -15°C	-40 ~ -15°C	
Compressor	Type	Liquid Injection	Enhanced Vapor Injection	Liquid Injection	Enhanced Vapor Injection	
	Lubrication Oil	FV32S 1.7L	FV32S 1.7L	3GSD 1.7L	3GSD 1.7L	
	Crankcase Heating	220V 35W	220V 35W	220V 35W	220V 35W	
Condenser	Structure		Finned Tube	Finned Tube	Finned Tube	Finned Tube
	Fan	Power	220V/70W	220V/70W	220V/70W	220V/70W
		Diameter	460 mm	460 mm	460 mm	460 mm
		Qty.	1	1	1	1
Liquid Receiver Volume		3 L	3 L	3 L	3 L	
Suction Accumulator Volume		2 L	2 L	2 L	2 L	
Safety Protection Devices	Anti-phase	Yes	Yes	Yes	Yes	
	Pressure Switch	2.6 MPa	2.6 MPa	2.6 MPa	2.6 MPa	
	Discharge Temp.	130 °C	130 °C	130 °C	130 °C	
	Over Current	9.5 A	9.5 A	9.5 A	9.5 A	
	Fan Overload	135 °C	135 °C	135 °C	135 °C	
	Fuse	5 A	5 A	5 A	5 A	
	Motor Temp.	Yes	Yes	Yes	Yes	
Connections	Gas Inlet	19.05 mm	19.05 mm	19.05 mm	19.05 mm	
	Liquid Outlet	9.53 mm	9.53 mm	9.53 mm	9.53 mm	
Weight		109 kg	111 kg	109 kg	111 kg	
Noise		54 dB	54 dB	54 dB	54 dB	

PRODUCTS



**Twin Fans
Low Temp. Scroll Unit**



MODEL		★ OCU-NS500QSF	★ OCU-NS600QSF	★ OCU-S500QSF	★ OCU-S600QSF	
Nominal Output		3.75 kW	4.5 kW	3.75 kW	4.5 kW	
Range of Ambient Temp.		-25 ~ +48°C	-25 ~ +48°C	-25 ~ +48°C	-25 ~ +48°C	
Range of Evaporating Temp.		-40 ~ -15°C	-40 ~ -15°C	-40 ~ -15°C	-40 ~ -15°C	
Compressor	Type	Enhanced Vapor Injection	Enhanced Vapor Injection	Enhanced Vapor Injection	Enhanced Vapor Injection	
	Lubrication Oil	FV32S 1.7L	FV32S 1.7L	3GSD 1.7L	3GSD 1.7L	
	Crankcase Heating	220V 35W	220V 35W	220V 35W	220V 35W	
Condenser	Structure		Finned Tube	Finned Tube	Finned Tube	Finned Tube
	Fan	Power	220V/70W	220V/70W	220V/70W	220V/70W
		Diameter	460 mm	460 mm	460 mm	460 mm
		Qty.	2	2	2	2
Liquid Receiver Volume		3 L	6 L	3 L	6 L	
Suction Accumulator Volume		3.5 L	3.5 L	3.5 L	3.5 L	
Safety Protection Devices	Anti-phase	Yes	Yes	Yes	Yes	
	Pressure Switch	2.78 MPa	2.78 Mpa	2.6 MPa	2.6 MPa	
	Discharge Temp.	130 °C	130 °C	130 °C	130 °C	
	Over Current	11 A	13 A	11 A	13 A	
	Fan Overload	135 °C	135 °C	135 °C	135 °C	
	Fuse	5 A	5 A	5 A	5 A	
	Motor Temp.	Yes	Yes	Yes	Yes	
Connections	Gas Inlet	19.05 mm	19.05 mm	19.05 mm	19.05 mm	
	Liquid Outlet	9.53 mm	9.53 mm	9.53 mm	9.53 mm	
Weight		130 kg	142 kg	130 kg	142 kg	
Noise		57 dB	57 dB	57 dB	57 dB	

PRODUCTS



**Twin Fans
Low Temp. Scroll Unit**



MODEL		★ OCU-NS500SF	★ OCU-NS600SF	★ OCU-S500SF	★ OCU-S600SF	
Nominal Output		3.75 kW	4.5 kW	3.75 kW	4.5 kW	
Range of Ambient Temp.		-25 ~ +48°C	-25 ~ +48°C	-25 ~ +48°C	-25 ~ +48°C	
Range of Evaporating Temp.		-40 ~ -15°C	-40 ~ -15°C	-40 ~ -15°C	-40 ~ -15°C	
Compressor	Type	Liquid Injection	Liquid Injection	Liquid Injection	Liquid Injection	
	Lubrication Oil	FV32S 1.7L	FV32S 1.7L	3GSD 1.7L	3GSD 1.7L	
	Crankcase Heating	220V 35W	220V 35W	220V 35W	220V 35W	
Condenser	Structure	Finned Tube	Finned Tube	Finned Tube	Finned Tube	
	Fan	Power	220V/70W	220V/70W	220V/70W	220V/70W
		Diameter	460 mm	460 mm	460 mm	460 mm
		Qty.	2	2	2	2
Liquid Receiver Volume		3 L	6 L	3 L	6 L	
Suction Accumulator Volume		3.5 L	3.5 L	3.5 L	3.5 L	
Safety Protection Devices	Anti-phase	Yes	Yes	Yes	Yes	
	Pressure Switch	2.78 MPa	2.78 Mpa	2.6 MPa	2.6 MPa	
	Discharge Temp.	130 °C	130 °C	130 °C	130 °C	
	Over Current	11 A	13 A	11 A	13 A	
	Fan Overload	135 °C	135 °C	135 °C	135 °C	
	Fuse	5 A	5 A	5 A	5 A	
	Motor Temp.	Yes	Yes	Yes	Yes	
Connections	Gas Inlet	19.05 mm	19.05 mm	19.05 mm	19.05 mm	
	Liquid Outlet	9.53 mm	9.53 mm	9.53 mm	9.53 mm	
Weight		128 kg	140 kg	128 kg	140 kg	
Noise		57 dB	57 dB	57 dB	57 dB	

PRODUCTS



Medium Temp.
Constant Frequency 8 HP

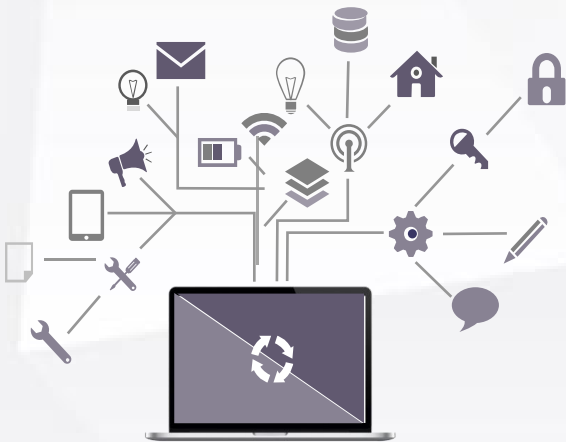


MODEL		★ OCU-NS800QSF	★ OCU-S800QSF	
Nominal Output		6 kW	6 kW	
Range of Ambient Temp.		-25 ~ +48°C	-25 ~ +48°C	
Range of Evaporating Temp.		-40 ~ -5°C	-40 ~ -5°C	
Compressor	Type	Enhanced Vapor Injection	Enhanced Vapor Injection	
	Lubrication Oil	FV32S 2.8L	3GSD 2.8L	
	Crankcase Heating	220V 44W x 2	220V 44W x2	
Condenser	Structure	Finned Tube	Finned Tube	
	Fan	Power	380V/60W	380V/60W
		Diameter	500 mm	500 mm
		Qty.	2	2
Liquid Receiver Volume		16 L	16 L	
Suction Accumulator Volume		3.8 L	3.8 L	
Safety Protection Devices	Anti-phase	Yes	Yes	
	Pressure Switch	2.7 Mpa	2.4 MPa	
	Discharge Temp.	130 °C	130 °C	
	Over Current	24 A	24 A	
	Fan Overload	135 °C	135 °C	
	Fuse	5 A	5 A	
	Motor Temp.	-	-	
Connections	Gas Inlet	28.58 mm	28.58 mm	
	Liquid Outlet	15.88 mm	15.88 mm	
Weight		241 kg	241 kg	
Noise		62 dB	62 dB	

PRODUCTS



Single Fan
DC Variable Frequency Unit

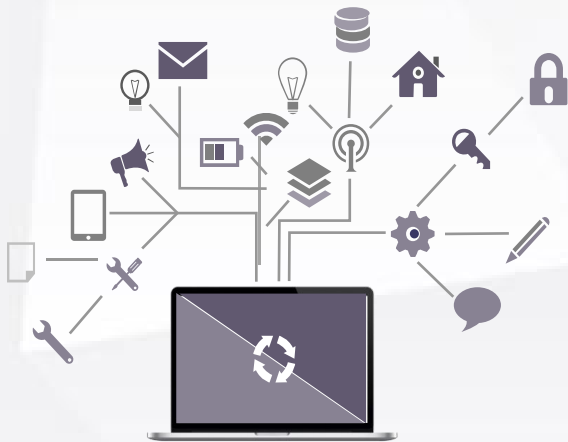


MODEL		★ OCU-NR300DSF	
Nominal Output		2.2 kW	
Range of Ambient Temp.		-25 ~ +48°C	
Range of Evaporating Temp.		-40 ~ -5°C	
Compressor	Lubrication Oil	SV68S 0.9L	
Condenser	Structure	Finned Tube	
	Fan	Power	220V/70W
		Diameter	460 mm
		Qty.	1
Liquid Receiver Volume		3 L	
Suction Accumulator Volume		2 L	
Safety Protection Devices	Anti-phase	Yes	
	Pressure Switch	2.78 Mpa	
	Discharge Temp.	125 °C	
	Over Current	6.2 A	
	Fan Overload	135 °C	
	Fuse	5 A	
	Motor Temp.	-	
Connections	Gas Inlet	15.88 mm	
	Liquid Outlet	9.53 mm	
Weight		100 kg	
Noise		54 dB	

PRODUCTS



**Twin Fans
DC Variable Frequency Unit**



MODEL		★ OCU-NR450DSF	★ OCU-NR600DSF	
Nominal Output		3.375 kW	4.5 kW	
Range of Ambient Temp.		-25 ~ +48°C	-25 ~ +48°C	
Range of Evaporating Temp.		-40 ~ -5°C	-40 ~ -5°C	
Compressor	Lubrication Oil	FV68S 1.35L	FV68S 1.9L	
Condenser	Structure	Finned Tube	Finned Tube	
	Fan	Power	220V/70W	220V/70W
		Diameter	460 mm	460 mm
		Qty.	2	2
Liquid Receiver Volume		6 L	6 L	
Suction Accumulator Volume		2 L	3.8 L	
Safety Protection Devices	Anti-phase	-	-	
	Pressure Switch	2.8 Mpa	2.8 Mpa	
	Discharge Temp.	125 °C	125 °C	
	Over Current	20 A	25 A	
	Fan Overload	135 °C	135 °C	
	Fuse	5 A	5 A	
	Motor Temp.	-	-	
Connections	Gas Inlet	15.88 mm	22.22 mm	
	Liquid Outlet	9.52 mm	12.7 mm	
Weight		120 kg	152 kg	
Noise		58 dB	60 Db (120 Hz), 65 dB (180 Hz)	

PRODUCTS



Single Phase
Low Temp. Embedded Unit



MODEL		★UF-NRH860SFJ	★ UF-NRH1160SFJ	★UF-RH860SFJ	★ UF-RH1160SFJ
Power Supply		1 Phase, 220V, 50Hz	1 Phase, 220V, 50Hz	1 Phase, 220V, 50Hz	1 Phase, 220V, 50Hz
Refrigerant		R404A	R404A	R22	R22
Range of Ambient Temp.		-7 ~ +43°C	-7 ~ +43°C	-7 ~ +43°C	-7 ~ +43°C
Range of Evaporating Temp.		-45 ~ -5°C	-45 ~ -5°C	-40 ~ -5°C	-40 ~ -5°C
Compressor	Lubrication Oil	FV68S 0.4L	FV68S 0.4L	3GSD-T 0.4L	3GSD 0.4L
	Structure	Finned Tube	Finned Tube	Finned Tube	Finned Tube
Condenser	Power	220V/70W	220V/70W	220V/70W	220V/70W
	Fan Air Volume	750	910	750	910
Liquid Receiver Volume		0.74 L	0.74 L	0.8 L	0.74 L
Wiring	Breaker	5A	5A	5A	5A
	Area	2 mm ²	2 mm ²	2 mm ²	2 mm ²
	Ground Wire Area	2 mm ²	2 mm ²	2 mm ²	2 mm ²
Connections	Gas Inlet	12.7 mm	12.7 mm	12.7 mm	12.7 mm
	Liquid Outlet	9.53 mm	9.53 mm	9.53 mm	9.53 mm
Weight		32 kg	34 kg	32 kg	34 kg
Noise		51 dB	53 dB	51 dB	53 dB

PRODUCTS



**3 Phase
Low Temp. Embedded Unit**



MODEL		★ UF-NRH1580SFJ	★ UF-RH1580SFJ	★ UF-RH2280SFJ	
Power Supply		3 Phase, 220V, 50Hz	3 Phase, 220V, 50Hz	3 Phase, 220V, 50Hz	
Refrigerant		R404A	R22	R22	
Range of Ambient Temp.		-7 ~ +43°C	-7 ~ +43°C	-7 ~ +43°C	
Range of Evaporating Temp.		-40 ~ -20°C	-40 ~ -5°C	-40 ~ -5°C	
Compressor	Lubrication Oil	FV68S 0.9L	3GSD-T 0.9L	3GSD 0.9L	
Condenser	Structure	Finned Tube	Finned Tube	Finned Tube	
	Fan	Power	220V/70W	220V/70W	220V/70W
		Air Volume	1000	1000	1000
Liquid Receiver Volume		1.1 L	1.1 L	1.1 L	
Wiring	Breaker	5A	5A	5A	
	Area	2 mm ²	2 mm ²	2 mm ²	
	Ground Wire Area	2 mm ²	2 mm ²	2 mm ²	
Connections	Gas Inlet	15.88 mm	15.88 mm	15.88 mm	
	Liquid Outlet	9.53 mm	9.53 mm	9.53 mm	
Weight		60.5 kg	60.5 kg	65 kg	
Noise		54 dB	53.4 dB	54 dB	

PRODUCTS

	Cold Storage	Ambient Temp. Range: -25 ~+48°C			Evaporating Temp. Range: -15~+10°C			Power Supply: 3, 380V, 50Hz		
		Ambient Temp. 32°C			Ambient Temp. 38°C			Ambient Temp. 43°C		
★R404A/R507/R448/R449	Evaporating Temp.	Capacity (kW)	Power input (kW)	Current (A)	Capacity (kW)	Power input (kW)	Current (A)	Capacity (kW)	Power input (kW)	Current (A)
OCU-NS350HF	-15	4.87	2.77	5.69	4.36	3.13	6.15	3.95	3.44	6.60
	-10	5.87	2.88	5.84	5.24	3.22	6.29	4.81	3.57	6.78
	-5	7.45	2.97	5.95	6.82	3.33	6.44	6.24	3.68	6.93
	0	8.70	3.08	6.10	8.07	3.46	6.62	7.36	3.80	7.12
	5	10.04	3.21	6.28	9.21	3.59	6.81	8.39	3.93	9.18
	10	11.26	3.33	6.46	10.12	3.74	7.05	-	-	-
OCU-NS400HF	-15	5.71	3.18	6.29	5.05	3.59	6.86	4.60	3.96	7.39
	-10	6.80	3.32	6.48	6.06	3.71	7.04	5.43	4.08	7.56
	-5	8.40	3.43	6.63	7.57	3.82	7.18	6.90	4.20	7.74
	0	9.85	3.59	6.87	9.01	4.04	7.50	8.28	4.45	8.12
	5	11.30	3.71	7.04	10.22	4.16	7.70	9.32	4.59	8.34
	10	12.96	3.83	7.12	11.79	4.30	7.84	-	-	-

PRODUCTS

	Cold Storage	Ambient Temp. Range: -25 ~+48°C			Evaporating Temp. Range: -15~+10°C			Power Supply: 3, 380V, 50Hz		
		Ambient Temp. 32°C			Ambient Temp. 38°C			Ambient Temp. 43°C		
★R404A/R507/R448/R449	Evaporating Temp.	Capacity (kW)	Power input (kW)	Current (A)	Capacity (kW)	Power input (kW)	Current (A)	Capacity (kW)	Power input (kW)	Current (A)
OCU-NS500HF	-15	7.20	3.99	7.30	6.47	4.53	8.10	5.84	5.01	8.83
	-10	8.66	4.04	7.37	7.79	4.74	8.43	6.83	5.10	8.99
	-5	11.03	4.18	7.58	9.88	4.76	8.46	8.88	5.34	9.34
	0	12.76	4.30	7.76	11.46	4.85	8.59	10.59	5.35	9.37
	5	14.54	4.56	8.16	13.61	4.99	8.82	12.61	5.57	9.72
	10	16.98	4.86	8.63	15.52	5.18	9.12	-	-	-
OCU-NS600HF	-15	8.77	4.64	8.39	7.56	5.32	9.43	6.72	5.99	10.45
	-10	10.41	4.82	8.67	9.35	5.42	9.59	8.40	6.08	10.62
	-5	12.81	5.01	8.95	11.55	5.70	10.10	10.61	6.46	11.21
	0	14.99	5.20	9.26	13.65	5.99	10.48	12.39	6.75	11.75
	5	17.37	5.55	9.83	15.65	6.27	10.92	14.39	7.03	12.20
	10	19.80	5.79	10.20	18.06	6.65	11.57	-	-	-

PRODUCTS

	Cold Storage	Ambient Temp. Range: -25 ~+48°C			Evaporating Temp. Range: -15~+10°C			Power Supply: 3, 380V, 50Hz		
		Ambient Temp. 32°C			Ambient Temp. 38°C			Ambient Temp. 43°C		
★R404A/R507/R448/R449	Evaporating Temp.	Capacity (kW)	Power input (kW)	Current (A)	Capacity (kW)	Power input (kW)	Current (A)	Capacity (kW)	Power input (kW)	Current (A)
OCU-NS700HF	-15	9.42	5.07	9.50	8.48	5.78	10.55	7.60	6.38	11.49
	-10	11.53	5.29	9.83	10.28	5.94	10.80	9.24	6.66	11.92
	-5	14.02	5.61	10.31	12.72	6.25	11.28	11.87	7.00	12.46
	0	16.61	6.02	10.94	15.25	6.60	11.84	13.95	7.30	12.95
	5	18.31	6.29	11.35	17.20	6.75	12.08	15.77	7.46	13.21
	10	22.70	6.56	11.80	19.75	7.34	13.04	-	-	-
OCU-NS800HF	-15	12.00	6.23	11.80	11.14	6.83	12.74	10.03	7.40	13.63
	-10	14.12	6.41	12.08	13.03	7.18	13.29	12.25	7.66	14.05
	-5	17.71	6.78	12.64	16.53	7.36	13.56	14.92	7.91	14.45
	0	20.27	6.99	12.97	18.69	7.75	14.19	16.76	8.40	15.24
	5	22.26	7.38	13.59	20.42	8.04	14.67	18.62	8.56	15.51
	10	26.57	8.04	14.67	24.97	8.65	15.67	22.92	9.14	16.48

PRODUCTS

	Cold Storage	Ambient Temp. Range: -25 ~+48°C			Evaporating Temp. Range: -15~+10°C			Power Supply: 3, 380V, 50Hz		
		Ambient Temp. 32°C			Ambient Temp. 38°C			Ambient Temp. 43°C		
★ R22	Evaporating Temp.	Capacity (kW)	Power input (kW)	Current (A)	Capacity (kW)	Power input (kW)	Current (A)	Capacity (kW)	Power input (kW)	Current (A)
OCU-S350HF	-15	4.77	2.27	5.03	4.42	2.55	5.35	3.98	2.82	5.69
	-10	5.71	2.38	5.16	5.33	2.64	5.48	4.90	2.90	5.81
	-5	7.07	2.47	5.26	6.62	2.74	5.61	6.35	2.99	5.93
	0	8.38	2.53	5.33	7.97	2.81	5.70	7.55	3.09	6.07
	5	9.88	2.64	5.48	9.35	2.93	5.86	8.88	3.20	6.23
	10	11.48	2.77	5.66	10.85	3.07	6.05	-	-	-
OCU-S400HF	-15	5.13	2.79	5.50	4.80	3.14	6.00	4.49	3.47	6.49
	-10	6.56	2.81	5.53	5.91	3.23	6.13	5.52	3.59	6.67
	-5	8.04	2.94	5.71	7.29	3.34	6.31	6.89	3.69	6.82
	0	9.60	3.02	5.83	8.99	3.39	6.37	8.19	3.81	7.00
	5	11.51	3.31	6.25	10.53	3.57	6.64	9.65	3.97	7.26
	10	13.36	3.48	6.51	12.56	3.92	7.19	-	-	-

PRODUCTS

	Cold Storage	Ambient Temp. Range: -25 ~+48°C			Evaporating Temp. Range: -15~+10°C			Power Supply: 3, 380V, 50Hz		
		Ambient Temp. 32°C			Ambient Temp. 38°C			Ambient Temp. 43°C		
★ R22	Evaporating Temp.	Capacity (kW)	Power input (kW)	Current (A)	Capacity (kW)	Power input (kW)	Current (A)	Capacity (kW)	Power input (kW)	Current (A)
OCU-S500HF	-15	6.58	3.48	6.53	6.14	3.90	7.14	5.73	4.32	7.76
	-10	8.19	3.53	6.62	7.55	4.03	7.32	7.00	4.47	7.97
	-5	10.00	3.67	6.79	9.26	4.08	7.38	8.62	4.64	8.22
	0	11.93	3.80	6.99	11.07	4.27	7.68	10.33	4.76	8.44
	5	14.24	4.08	7.40	13.03	4.42	7.92	12.23	4.87	8.60
	10	16.59	4.08	7.41	15.44	4.72	8.38	-	-	-
OCU-S600HF	-15	7.93	4.08	7.59	7.21	4.69	8.51	-	-	-
	-10	9.68	4.16	7.71	8.79	4.80	8.67	8.10	5.40	9.59
	-5	12.18	4.26	7.84	11.08	4.88	8.80	10.30	5.52	9.79
	0	14.36	4.54	8.28	13.16	5.11	9.15	12.32	5.74	10.15
	5	16.36	4.77	8.63	15.58	5.32	9.48	14.42	5.99	10.56
	10	19.08	5.01	9.01	17.72	5.73	10.15	-	-	-

PRODUCTS

	Cold Storage	Ambient Temp. Range: -25 ~+48°C			Evaporating Temp. Range: -15~+10°C			Power Supply: 3, 380V, 50Hz		
		Ambient Temp. 32°C			Ambient Temp. 38°C			Ambient Temp. 43°C		
★ R22	Evaporating Temp.	Capacity (kW)	Power input (kW)	Current (A)	Capacity (kW)	Power input (kW)	Current (A)	Capacity (kW)	Power input (kW)	Current (A)
OCU-S700HF	-15	9.14	4.50	8.64	8.27	4.99	9.34	7.78	5.50	10.09
	-10	10.93	4.67	8.80	9.67	5.30	9.80	9.26	5.67	10.36
	-5	13.10	4.93	9.24	12.52	5.54	10.15	11.51	6.02	10.89
	0	15.20	5.26	9.74	14.43	5.94	10.76	13.50	6.56	11.74
	5	17.92	5.52	10.14	16.86	6.13	11.07	15.81	6.82	12.13
	10	21.24	5.86	10.68	19.01	6.53	11.68	-	-	-
OCU-S800HF	-15	11.28	5.57	10.83	10.71	6.02	11.52	9.54	6.60	12.44
	-10	14.15	5.45	10.65	13.18	6.40	12.11	12.22	6.87	12.86
	-5	17.32	5.82	11.18	16.62	6.21	11.77	14.84	7.32	13.57
	0	20.49	6.03	11.51	19.24	6.87	12.81	17.83	7.75	14.25
	5	23.36	6.72	12.56	22.00	7.55	13.89	20.75	8.18	14.92
	10	25.09	6.96	12.98	24.28	7.73	14.19	23.88	7.95	14.57

PRODUCTS

Freezing	Cold Storage	Ambient Temp. Range: -25 ~+48°C			Evaporating Temp. Range: -40~-5°C			Power Supply: 1, 220V, 50Hz		
		Ambient Temp. 32°C			Ambient Temp. 38°C			Ambient Temp. 43°C		
★R404A/R507/R448/R449	Evaporating Temp.	Capacity (kW)	Power input (kW)	Current (A)	Capacity (kW)	Power input (kW)	Current (A)	Capacity (kW)	Power input (kW)	Current (A)
OCU-NR200SF-D	-40	0.97	1.42	7.86	0.93	1.53	8.28	0.85	1.58	8.44
	-35	1.26	1.46	8.03	1.16	1.58	8.44	1.06	1.67	8.82
	-30	1.55	1.52	8.22	1.40	1.64	8.67	1.30	1.75	9.12
	-25	1.94	1.56	8.40	1.74	1.69	8.89	1.58	1.85	9.53
	-20	2.34	1.63	8.64	2.11	1.76	9.18	1.90	1.93	9.87
	-15	2.83	1.68	8.84	2.54	1.79	9.28	2.26	1.94	9.92
	-10	3.33	1.71	8.96	2.96	1.87	9.64	2.71	2.00	10.16
	-5	4.16	1.74	9.06	3.88	1.90	9.74	3.52	2.06	10.40
OCU-NR300SF-D	-40	1.41	1.98	11.99	1.28	2.16	12.53	1.16	2.30	13.01
	-35	1.74	2.08	12.29	1.57	2.24	12.82	1.45	2.40	13.35
	-30	2.20	2.18	12.63	2.01	2.36	13.21	1.83	2.52	13.80
	-25	2.66	2.28	12.95	2.41	2.46	13.59	2.22	2.63	14.22
	-20	3.30	2.36	13.26	2.94	2.59	14.07	2.67	2.77	14.75
	-15	3.90	2.46	13.62	3.51	2.66	14.36	3.13	2.90	15.29
	-10	4.49	2.57	14.02	4.15	2.79	14.89	3.82	3.00	15.73
	-5	5.66	2.64	14.25	5.06	2.88	15.20	4.80	3.09	16.08

PRODUCTS

Freezing	Cold Storage	Ambient Temp. Range: -25 ~+48°C			Evaporating Temp. Range: -40~-5°C			Power Supply: 3, 380V, 50Hz		
		Ambient Temp. 32°C			Ambient Temp. 38°C			Ambient Temp. 43°C		
	Evaporating Temp.	Capacity (kW)	Power input (kW)	Current (A)	Capacity (kW)	Power input (kW)	Current (A)	Capacity (kW)	Power input (kW)	Current (A)
OCU-NR300SF	-40	1.35	1.74	3.35	1.21	1.88	3.56	1.11	2.02	3.77
★R404A/R507/R448/R449	-35	1.71	1.81	3.47	1.55	1.98	3.70	1.43	2.12	3.92
	-30	2.23	1.93	3.63	1.98	2.07	3.85	1.83	2.23	4.10
	-25	2.64	2.03	3.79	2.37	2.21	4.07	2.19	2.38	4.32
	-20	3.16	2.10	3.88	2.84	2.29	4.18	2.65	2.51	4.53
	-15	3.90	2.19	4.04	3.47	2.41	4.38	3.11	2.60	4.68
	-10	4.58	2.30	4.20	4.12	2.52	4.54	3.65	2.72	4.86
	-5	5.75	2.38	4.33	5.08	2.63	4.72	4.70	2.82	5.03
OCU-R300SF	-40	1.33	1.50	3.02	1.19	1.64	3.21	1.08	1.78	3.41
R22	-35	1.70	1.60	3.15	1.52	1.74	3.36	1.40	1.88	3.56
	-30	2.14	1.67	3.25	1.94	1.85	3.51	1.83	2.02	3.75
	-25	2.64	1.81	3.44	2.42	1.98	3.70	2.23	2.13	3.93
	-20	3.28	1.87	3.55	2.95	2.10	3.89	2.74	2.27	4.15
	-15	3.95	2.15	3.96	3.62	2.31	4.22	3.35	2.50	4.51
	-10	4.69	2.26	4.15	4.29	2.48	4.48	3.94	2.68	4.80
	-5	5.60	2.37	4.30	5.16	2.60	4.69	4.73	2.84	5.06

PRODUCTS

Freezing		Ambient Temp. Range: -25 ~+48°C			Evaporating Temp. Range: -40~-15°C			Power Supply: 3, 380V, 50Hz		
		Ambient Temp. 32°C			Ambient Temp. 38°C			Ambient Temp. 43°C		
★R404A/R507/R448/R449	Evaporating Temp.	Capacity (kW)	Power input (kW)	Current (A)	Capacity (kW)	Power input (kW)	Current (A)	Capacity (kW)	Power input (kW)	Current (A)
OCU-NS400SF	-40	2.04	3.04	5.84	1.85	3.55	6.56	1.72	4.02	7.26
	-35	2.48	3.05	5.86	2.25	3.60	6.65	2.04	4.09	7.38
	-30	3.11	3.08	5.90	2.75	3.61	6.66	2.63	4.09	7.39
	-25	3.76	3.01	5.81	3.34	3.65	6.73	3.15	4.10	7.41
	-20	4.50	3.08	5.92	4.03	3.52	6.56	3.83	4.12	7.45
	-15	5.41	3.16	6.04	4.81	3.61	6.68	4.37	4.03	7.31
OCU-NS500SF	-40	2.61	3.85	7.08	2.36	4.43	7.92	2.26	4.95	8.72
	-35	3.19	3.91	7.18	2.85	4.47	8.00	2.55	5.03	8.83
	-30	3.95	4.02	7.33	3.55	4.52	8.08	3.17	5.08	8.93
	-25	4.62	3.81	7.04	4.36	4.58	8.18	4.12	5.11	9.98
	-20	5.76	4.05	7.25	5.11	4.44	7.97	4.77	5.18	9.09
	-15	7.05	4.06	7.41	6.22	4.60	8.23	5.55	5.07	8.94

PRODUCTS

Freezing		Ambient Temp. Range: -25 ~+48°C			Evaporating Temp. Range: -40~-15°C			Power Supply: 3, 380V, 50Hz		
		Ambient Temp. 32°C			Ambient Temp. 38°C			Ambient Temp. 43°C		
★R404A/R507/R448/R449	Evaporating Temp.	Capacity (kW)	Power input (kW)	Current (A)	Capacity (kW)	Power input (kW)	Current (A)	Capacity (kW)	Power input (kW)	Current (A)
OCU-NS600SF	-40	2.91	4.06	7.81	2.57	4.93	9.04	2.42	5.71	10.27
	-35	3.52	4.10	7.87	3.09	4.97	9.09	2.67	5.74	10.36
	-30	4.37	4.34	8.22	3.77	4.87	8.98	3.38	5.72	10.24
	-25	4.98	4.18	7.98	4.50	5.03	9.21	4.28	5.72	10.24
	-20	6.25	4.37	8.12	5.25	4.86	8.96	4.87	5.74	10.28
	-15	7.73	4.29	8.13	6.50	5.16	9.43	5.94	5.65	10.13
OCU-NS400QSF	-40	2.50	3.22	6.10	2.28	3.82	6.97	2.17	4.50	8.00
	-35	3.18	3.32	6.25	2.94	3.92	7.13	2.78	4.55	8.06
	-30	4.07	3.43	6.42	3.77	4.03	7.30	3.41	4.63	8.20
	-25	4.98	3.49	6.50	4.71	4.08	7.37	4.29	4.66	8.25
	-20	5.81	3.52	6.56	5.70	4.09	7.41	5.26	4.74	8.41
	-15	6.81	3.54	6.59	6.62	4.17	7.54	6.34	4.77	8.45

PRODUCTS

Freezing		Ambient Temp. Range: -25 ~+48°C			Evaporating Temp. Range: -40~-15°C			Power Supply: 3, 380V, 50Hz		
		Ambient Temp. 32°C			Ambient Temp. 38°C			Ambient Temp. 43°C		
★ R404A/R507/R448/R449	Evaporating Temp.	Capacity (kW)	Power input (kW)	Current (A)	Capacity (kW)	Power input (kW)	Current (A)	Capacity (kW)	Power input (kW)	Current (A)
OCU-NS500SF	-40	3.35	4.16	7.53	3.18	4.77	8.43	3.04	5.31	9.20
	-35	4.25	4.24	7.65	3.98	4.85	8.56	3.90	5.37	9.27
	-30	5.21	4.32	7.77	4.96	5.04	8.84	4.78	5.46	9.51
	-25	6.45	4.35	7.83	6.08	5.04	8.88	5.67	5.62	9.77
	-20	7.67	4.45	7.97	7.27	5.10	8.97	6.85	5.73	9.95
	-15	8.73	4.66	8.31	8.53	5.14	9.04	7.92	5.78	10.03
OCU-NS600QSF	-40	3.73	4.39	8.31	3.45	5.31	9.62	3.27	6.13	10.84
	-35	4.68	4.44	8.39	4.33	5.38	9.73	4.07	6.14	10.88
	-30	5.76	4.66	8.71	5.26	5.42	9.82	5.09	6.15	10.90
	-25	6.95	4.77	8.87	6.28	5.54	10.00	5.89	6.29	11.14
	-20	8.31	4.80	8.93	7.47	5.59	10.08	6.99	6.36	11.25
	-15	9.58	4.93	9.12	8.91	5.77	10.36	8.47	6.43	11.37

PRODUCTS

Freezing		Ambient Temp. Range: -25 ~+48°C			Evaporating Temp. Range: -40~-5°C			Power Supply: 3, 380V, 50Hz		
		Ambient Temp. 32°C			Ambient Temp. 38°C			Ambient Temp. 43°C		
★R404A/R507/R448/R449	Evaporating Temp.	Capacity (kW)	Power input (kW)	Current (A)	Capacity (kW)	Power input (kW)	Current (A)	Capacity (kW)	Power input (kW)	Current (A)
OCU-NS800QSF	-40	5.97	5.71	10.94	5.64	6.19	11.65	5.46	6.70	12.44
	-35	7.44	6.03	11.43	7.35	6.59	12.28	6.84	7.02	12.94
	-30	9.22	6.26	11.78	8.79	6.78	12.58	8.46	7.36	13.49
	-25	11.16	6.82	12.65	10.58	7.53	13.78	10.15	8.00	14.54
	-20	13.26	7.20	13.27	12.49	7.72	14.10	11.45	8.25	14.94
	-15	14.98	7.28	13.40	13.33	7.99	14.54	12.57	8.54	15.44
	-10	17.65	7.71	14.08	16.19	8.42	15.23	14.91	9.14	16.44
	-5	21.22	8.23	14.90	19.05	9.02	16.21	17.53	9.55	17.11

PRODUCTS

Freezing		Ambient Temp. Range: -25 ~+48°C			Evaporating Temp. Range: -40~-15°C			Power Supply: 3, 380V, 50Hz		
		Ambient Temp. 32°C			Ambient Temp. 38°C			Ambient Temp. 43°C		
★ R22	Evaporating Temp.	Capacity (kW)	Power input (kW)	Current (A)	Capacity (kW)	Power input (kW)	Current (A)	Capacity (kW)	Power input (kW)	Current (A)
OCU-S400SF	-40	1.96	2.56	5.17	1.83	2.95	5.69	1.69	3.30	6.18
	-35	2.46	2.60	5.23	2.33	3.00	5.78	2.28	3.38	6.31
	-30	2.84	2.64	5.30	2.76	3.05	5.85	2.55	3.43	6.38
	-25	3.68	2.69	5.35	3.28	3.09	5.91	3.15	3.50	6.48
	-20	4.47	2.73	5.42	4.11	3.17	6.04	3.87	3.58	6.62
	-15	5.40	2.79	5.51	4.89	3.23	6.11	4.69	3.61	6.66
OCU-S500SF	-40	2.61	3.33	6.37	2.40	3.83	7.06	2.28	4.42	7.92
	-35	3.29	3.36	6.42	3.06	3.87	7.12	2.84	4.49	8.04
	-30	4.02	3.42	6.50	3.75	3.92	7.21	3.50	4.52	8.09
	-25	4.90	3.51	6.63	4.61	3.98	7.30	4.26	4.65	8.28
	-20	5.99	3.65	6.83	5.64	4.12	7.51	5.25	4.67	8.33
	-15	7.22	3.66	6.85	6.85	4.18	7.60	6.35	4.74	8.44

PRODUCTS

Freezing		Ambient Temp. Range: -25 ~+48°C			Evaporating Temp. Range: -40~-15°C			Power Supply: 3, 380V, 50Hz		
		Ambient Temp. 32°C			Ambient Temp. 38°C			Ambient Temp. 43°C		
★ R22	Evaporating Temp.	Capacity (kW)	Power input (kW)	Current (A)	Capacity (kW)	Power input (kW)	Current (A)	Capacity (kW)	Power input (kW)	Current (A)
OCU-S600SF	-40	2.87	3.68	7.62	2.69	4.09	8.16	2.53	4.59	8.81
	-35	3.43	3.70	7.65	3.30	4.14	8.21	3.10	4.67	8.92
	-30	4.23	3.76	7.73	4.01	4.21	8.31	3.78	4.78	9.07
	-25	5.10	3.80	7.79	4.76	4.32	8.46	4.47	4.84	9.15
	-20	6.07	3.91	7.92	5.69	4.38	8.54	5.34	4.85	9.20
	-15	7.37	3.96	8.00	6.85	4.45	8.64	6.46	4.92	9.30
OCU-S400QSF	-40	2.24	2.62	5.26	2.21	3.01	5.79	2.16	3.61	6.63
	-35	2.91	2.82	5.54	2.77	3.26	6.14	2.68	3.71	6.79
	-30	3.57	2.86	5.59	3.40	3.33	6.24	3.31	3.83	6.97
	-25	4.46	2.97	5.75	4.24	3.45	6.44	4.10	3.92	7.12
	-20	5.45	3.04	5.85	5.27	3.51	6.52	5.00	3.95	7.18
	-15	6.48	3.09	5.92	6.16	3.54	6.57	6.04	4.04	7.31

PRODUCTS

Freezing		Ambient Temp. Range: -25 ~+48°C			Evaporating Temp. Range: -40~-15°C			Power Supply: 3, 380V, 50Hz		
		Ambient Temp. 32°C			Ambient Temp. 38°C			Ambient Temp. 43°C		
★ R22	Evaporating Temp.	Capacity (kW)	Power input (kW)	Current (A)	Capacity (kW)	Power input (kW)	Current (A)	Capacity (kW)	Power input (kW)	Current (A)
OCU-S500QSF	-40	3.05	3.61	6.75	2.92	4.05	7.38	2.76	4.47	7.97
	-35	3.81	3.71	6.89	3.73	4.18	7.58	3.44	4.52	8.05
	-30	4.78	3.82	7.05	4.56	4.33	7.80	4.32	4.62	8.21
	-25	5.71	3.91	7.18	5.28	4.47	8.01	5.19	4.81	8.50
	-20	6.87	3.93	7.22	6.58	4.55	8.13	6.30	4.91	8.67
	-15	8.15	4.04	7.37	7.99	4.59	8.19	7.59	5.04	8.88
OCU-S600QSF	-40	3.30	3.88	7.61	3.22	4.33	8.21	3.15	4.88	9.00
	-35	4.14	3.92	7.66	3.94	4.43	8.35	3.83	4.95	9.10
	-30	5.20	4.02	7.80	4.95	4.53	8.52	4.75	5.04	9.22
	-25	6.27	4.05	7.85	6.01	4.63	8.64	5.82	5.14	9.38
	-20	7.52	4.19	8.05	7.23	4.75	8.84	6.85	5.28	9.62
	-15	9.00	4.31	8.23	8.65	4.84	8.97	8.25	5.39	9.78

PRODUCTS

Freezing		Ambient Temp. Range: -25 ~+48°C			Evaporating Temp. Range: -40~-5°C			Power Supply: 3, 380V, 50Hz		
		Ambient Temp. 32°C			Ambient Temp. 38°C			Ambient Temp. 43°C		
★ R22	Evaporating Temp.	Capacity (kW)	Power input (kW)	Current (A)	Capacity (kW)	Power input (kW)	Current (A)	Capacity (kW)	Power input (kW)	Current (A)
OCU-S800QSF	-40	4.68	5.29	10.29	4.48	5.97	11.29	4.35	6.82	12.58
	-35	6.00	5.62	10.80	5.82	6.20	11.66	5.55	7.03	12.92
	-30	7.47	5.75	11.00	7.18	6.55	12.21	7.01	7.45	13.61
	-25	9.53	6.12	11.57	8.98	6.84	12.67	8.60	7.73	14.08
	-20	11.25	6.40	12.00	10.93	7.24	13.30	10.39	7.96	14.44
	-15	13.52	6.63	12.36	12.90	7.63	13.93	12.37	8.23	14.88
	-10	15.77	6.90	12.80	15.16	7.90	14.39	14.58	8.47	15.33
	-5	18.99	7.35	13.51	18.41	8.37	15.52	17.45	8.89	15.96

PRODUCTS

Freezing	Cold Storage	Ambient Temp. Range: -25 ~+48°C			Evaporating Temp. Range: -40~-5°C			Power Supply: 3, 380V, 50Hz		
Variable Frequency	R404A/R507/R448/ R449	Ambient Temp. 32°C			Ambient Temp. 38°C			Ambient Temp. 43°C		
OCU-NR300DSF	Evaporating Temp.	Capacity (kW)	Power input (kW)	Current (A)	Capacity (kW)	Power input (kW)	Current (A)	Capacity (kW)	Power input (kW)	Current (A)
160 Hz	-40	1.60	1.86	3.80	1.45	1.97	4.03	1.36	2.10	4.28
	-35	2.01	2.00	4.08	1.85	2.14	4.36	1.70	2.26	4.60
	-30	2.41	2.14	4.36	2.26	2.30	4.66	2.07	2.42	4.90
	-25	2.98	2.30	4.67	2.79	2.45	4.95	2.45	2.58	5.19
	-20	3.56	2.49	5.02	3.32	2.63	5.29	2.89	2.80	5.62
	-15	4.29	2.65	5.33	3.90	2.84	5.69	3.51	3.00	6.00
	-10	5.03	2.83	5.67	4.56	3.03	6.05	4.16	3.23	6.41
	-5	6.24	3.00	6.00	5.72	3.25	6.47	5.49	3.48	6.89
120 Hz	-40	1.23	1.42	2.94	1.15	1.52	3.14	1.05	1.61	3.33
	-35	1.55	1.51	3.11	1.42	1.61	3.32	1.29	1.71	3.53
	-30	1.93	1.61	3.32	1.75	1.71	3.53	1.59	1.81	3.74
	-25	2.30	1.70	3.51	2.16	1.82	3.75	2.02	1.94	3.98
	-20	2.83	1.81	3.71	2.58	1.93	3.96	2.38	2.06	4.21
	-15	3.39	1.91	3.91	3.10	2.06	4.20	2.85	2.19	4.47
	-10	3.90	2.01	4.10	3.64	2.17	4.42	3.38	2.32	4.71
	-5	5.06	2.10	4.28	4.72	2.29	4.66	4.27	2.46	4.97

PRODUCTS

Freezing	Cold Storage	Ambient Temp. Range: -25 ~+48°C			Evaporating Temp. Range: -40~-5°C			Power Supply: 3, 380V, 50Hz		
Variable Frequency	R404A/R507/R448/ R449	Ambient Temp. 32°C			Ambient Temp. 38°C			Ambient Temp. 43°C		
OCU-NR300DSF	Evaporating Temp.	Capacity (kW)	Power input (kW)	Current (A)	Capacity (kW)	Power input (kW)	Current (A)	Capacity (kW)	Power input (kW)	Current (A)
80 Hz	-40	0.83	1.02	2.12	0.73	1.09	2.25	0.72	1.16	2.41
	-35	1.03	1.06	2.21	0.97	1.14	2.38	0.92	1.22	2.53
	-30	1.29	1.12	2.33	1.20	1.21	2.51	1.13	1.28	2.66
	-25	1.58	1.17	2.45	1.47	1.27	2.63	1.37	1.35	2.79
	-20	1.92	1.23	2.55	1.75	1.32	2.74	1.63	1.41	2.92
	-15	2.33	1.29	2.68	2.08	1.38	2.88	1.92	1.48	3.06
	-10	2.76	1.33	2.77	2.52	1.46	3.03	2.35	1.56	3.23
50 Hz	-5	3.54	1.37	2.84	3.27	1.51	3.13	3.03	1.63	3.37
	-40	0.45	0.75	1.56	0.43	0.81	1.69	0.40	0.87	1.82
	-35	0.63	0.77	1.59	0.59	0.84	1.75	0.54	0.89	1.87
	-30	0.80	0.79	1.66	0.75	0.86	1.80	0.73	0.92	1.94
	-25	0.98	0.82	1.71	0.89	0.89	1.86	0.84	0.96	2.01
	-20	1.20	0.85	1.77	1.13	0.93	1.95	1.09	1.00	2.11
	-15	1.45	0.88	1.82	1.36	0.96	2.00	1.27	1.05	2.20
	-10	1.73	0.90	1.87	1.55	1.01	2.10	1.40	1.09	2.28
	-5	2.21	0.92	1.92	2.03	1.02	2.14	1.91	1.12	2.34

PRODUCTS

Freezing	Cold Storage	Ambient Temp. Range: -25 ~+48°C			Evaporating Temp. Range: -40~-5°C			Power Supply: 3, 380V, 50Hz		
Variable Frequency	R404A/R507/R448/ R449	Ambient Temp. 32°C			Ambient Temp. 38°C			Ambient Temp. 43°C		
OCU-NR450DSF	Evaporating Temp.	Capacity (kW)	Power input (kW)	Current (A)	Capacity (kW)	Power input (kW)	Current (A)	Capacity (kW)	Power input (kW)	Current (A)
180 Hz	-40	2.45	2.78	5.43	2.06	2.99	5.75	-	-	-
	-35	2.80	2.93	5.66	2.50	3.14	5.95	2.34	3.41	6.37
	-30	3.52	3.16	6.01	3.18	3.38	6.34	2.88	3.59	6.67
	-25	4.30	3.41	6.40	3.93	3.66	6.77	3.56	3.86	7.08
	-20	5.50	3.63	6.75	4.88	3.94	7.21	4.53	4.15	7.51
	-15	6.74	3.92	7.21	6.03	4.19	7.60	5.50	4.42	7.96
	-10	7.89	4.10	7.48	7.19	4.46	8.05	6.43	4.71	8.40
	-5	9.78	4.32	7.83	8.98	4.68	8.37	8.33	4.94	8.26
160 Hz	-40	2.14	2.48	4.98	1.85	2.66	5.28	1.85	2.84	5.55
	-35	2.67	2.61	5.18	2.43	2.82	5.52	2.17	3.00	5.77
	-30	3.37	2.83	5.54	3.04	3.02	5.84	2.75	3.20	6.10
	-25	4.13	3.03	5.89	3.66	3.24	6.19	3.29	3.44	6.50
	-20	4.94	3.22	6.18	4.55	3.46	6.55	4.21	3.67	6.86
	-15	6.05	3.38	6.42	5.45	3.63	6.82	4.91	3.90	7.22
	-10	7.14	3.53	6.68	6.59	3.84	7.14	5.89	4.09	7.50
	-5	9.02	3.69	6.90	8.23	4.01	7.39	7.72	4.30	7.42

PRODUCTS

Freezing	Cold Storage	Ambient Temp. Range: -25 ~+48°C			Evaporating Temp. Range: -40~-5°C			Power Supply: 3, 380V, 50Hz		
Variable Frequency	R404A/R507/R448/ R449	Ambient Temp. 32°C			Ambient Temp. 38°C			Ambient Temp. 43°C		
OCU-NR450DSF	Evaporating Temp.	Capacity (kW)	Power input (kW)	Current (A)	Capacity (kW)	Power input (kW)	Current (A)	Capacity (kW)	Power input (kW)	Current (A)
120 Hz	-40	1.66	1.93	4.00	1.54	2.07	4.30	1.48	2.21	4.58
	-35	2.15	2.03	4.20	2.03	2.18	4.50	1.82	2.33	4.81
	-30	2.68	2.15	4.47	2.44	2.31	4.77	2.23	2.47	5.06
	-25	3.26	2.25	4.67	3.09	2.44	5.01	2.76	2.57	5.23
	-20	4.08	2.36	4.89	3.74	2.55	5.21	3.34	2.72	5.47
	-15	4.98	2.46	5.06	4.48	2.66	5.38	4.05	2.85	5.68
	-10	5.88	2.56	5.24	5.31	2.78	5.57	4.79	2.96	5.85
	-5	7.29	2.63	5.35	6.65	2.90	5.77	6.06	3.13	6.49
80 Hz	-40	1.12	1.40	2.90	1.03	1.54	3.23	0.92	1.64	3.45
	-35	1.43	1.46	3.04	1.31	1.58	3.30	1.21	1.68	3.54
	-30	1.80	1.53	3.16	1.65	1.65	3.44	1.55	1.76	3.70
	-25	2.24	1.58	3.29	2.02	1.71	3.58	1.88	1.82	3.83
	-20	2.69	1.65	3.45	2.45	1.78	3.73	2.31	1.88	3.95
	-15	3.24	1.71	3.57	2.94	1.85	3.89	2.69	1.98	4.17
	-10	3.79	1.74	3.66	3.49	1.91	4.01	3.19	2.05	4.33
	-5	4.85	1.78	3.74	4.42	1.97	4.14	4.15	2.11	4.45

PRODUCTS

Freezing	Cold Storage	Ambient Temp. Range: -25 ~+48°C			Evaporating Temp. Range: -40~-5°C			Power Supply: 3, 380V, 50Hz		
Variable Frequency	R404A/R507/R448/ R449	Ambient Temp. 32°C			Ambient Temp. 38°C			Ambient Temp. 43°C		
OCU-NR450DSF	Evaporating Temp.	Capacity (kW)	Power input (kW)	Current (A)	Capacity (kW)	Power input (kW)	Current (A)	Capacity (kW)	Power input (kW)	Current (A)
50 Hz	-40	0.68	1.07	2.18	0.61	1.17	2.41	0.58	1.25	2.62
	-35	0.92	1.10	2.26	0.81	1.19	2.48	0.77	1.28	2.68
	-30	1.14	1.13	2.31	1.05	1.21	2.51	0.98	1.30	2.71
	-25	1.42	1.15	2.35	1.25	1.25	2.60	1.19	1.34	2.80
	-20	1.66	1.18	2.45	1.57	1.28	2.68	1.44	1.39	2.91
	-15	2.08	1.19	2.47	1.90	1.30	2.70	1.76	1.41	2.97
	-10	2.49	1.21	2.50	2.24	1.32	2.78	2.02	1.43	3.02
	-5	3.16	1.22	2.51	2.90	1.34	2.80	2.69	1.47	3.10

PRODUCTS

Freezing	Cold Storage	Ambient Temp. Range: -25 ~+48°C			Evaporating Temp. Range: -40~-5°C			Power Supply: 3, 380V, 50Hz		
Variable Frequency	R404A/R507/R448/ R449	Ambient Temp. 32°C			Ambient Temp. 38°C			Ambient Temp. 43°C		
OCU-NR600DSF	Evaporating Temp.	Capacity (kW)	Power input (kW)	Current (A)	Capacity (kW)	Power input (kW)	Current (A)	Capacity (kW)	Power input (kW)	Current (A)
180 Hz	-40	3.86	3.67	7.75	3.45	3.98	8.35	3.22	4.29	8.91
	-35	4.67	3.72	7.87	4.59	4.13	8.60	4.20	4.46	9.19
	-30	6.11	4.08	8.55	5.64	4.37	9.04	5.19	4.57	9.40
	-25	7.59	4.47	9.23	6.97	4.74	9.68	6.46	5.01	10.11
	-20	8.73	4.92	10.01	7.98	5.25	10.54	7.33	5.47	10.91
	-15	11.01	5.36	10.71	10.17	5.64	11.18	9.19	6.03	11.82
	-10	12.59	5.68	11.24	11.54	6.20	12.10	10.43	6.55	12.68
	-5	15.69	6.29	12.20	14.51	6.71	12.88	13.49	7.13	13.65
	0	17.39	6.61	12.81	15.96	7.01	13.44	14.35	7.49	14.29
	5	19.78	7.20	13.75	17.96	7.83	14.88	16.71	8.29	15.81
140 Hz	-40	2.73	2.58	5.55	2.63	2.83	6.06	2.47	3.15	6.74
	-35	3.58	2.79	6.00	3.29	3.09	6.63	3.13	3.39	7.23
	-30	4.60	3.00	6.42	4.18	3.20	6.85	3.92	3.36	7.18
	-25	5.80	3.21	6.86	5.15	3.45	7.38	4.75	3.62	7.72
	-20	6.82	3.45	7.36	6.20	3.69	7.88	5.72	3.90	8.23
	-15	8.60	3.67	7.83	7.73	3.96	8.39	7.11	4.20	8.76
	-10	9.81	3.88	8.22	9.05	4.16	8.73	8.18	4.46	9.22
	-5	12.47	4.10	8.59	11.43	4.41	9.13	10.39	4.72	9.62
	0	14.31	4.40	9.13	13.04	4.74	9.70	12.00	5.08	10.22
	5	16.05	4.63	9.49	14.69	5.00	10.10	13.34	5.37	10.76

PRODUCTS

Freezing	Cold Storage	Ambient Temp. Range: -25 ~+48°C			Evaporating Temp. Range: -40~-5°C			Power Supply: 3, 380V, 50Hz		
Variable Frequency	R404A/R507/R448/ R449	Ambient Temp. 32°C			Ambient Temp. 38°C			Ambient Temp. 43°C		
OCU-NR600DSF	Evaporating Temp.	Capacity (kW)	Power input (kW)	Current (A)	Capacity (kW)	Power input (kW)	Current (A)	Capacity (kW)	Power input (kW)	Current (A)
100 Hz	-40	2.01	1.91	4.40	1.85	2.03	4.35	1.70	2.15	4.63
	-35	2.51	1.94	4.19	2.33	2.05	4.43	2.11	2.25	4.85
	-30	3.19	2.08	4.50	2.88	2.21	4.78	2.80	2.33	5.04
	-25	3.94	2.23	4.80	3.69	2.36	5.10	3.35	2.52	5.45
	-20	4.93	2.36	5.11	4.50	2.54	5.48	4.15	2.68	5.80
	-15	5.98	2.50	5.41	5.43	2.70	5.84	5.05	2.86	6.18
	-10	7.04	2.64	5.68	6.40	2.86	6.14	5.92	3.03	6.52
	-5	8.79	2.75	5.92	8.15	2.98	6.41	7.53	3.19	6.87
	0	10.28	2.83	6.08	9.37	3.11	6.68	8.68	3.35	7.18
	5	12.45	2.97	6.37	11.46	3.26	7.00	10.53	3.53	7.54
50 Hz	-40	0.88	1.02	2.16	0.78	1.07	2.25	0.74	1.09	2.33
	-35	1.16	1.10	2.32	1.02	1.15	2.44	0.94	1.18	2.52
	-30	1.44	1.18	2.50	1.33	1.22	2.62	1.22	1.28	2.74
	-25	1.87	1.25	2.66	1.72	1.30	2.79	1.65	1.37	2.93
	-20	2.35	1.31	2.80	2.15	1.38	2.96	1.97	1.45	3.13
	-15	2.95	1.36	2.92	2.63	1.45	3.12	2.44	1.53	3.31
	-10	3.55	1.42	3.05	3.19	1.51	3.25	2.89	1.61	3.47
	-5	4.47	1.47	3.15	4.13	1.56	3.36	3.82	1.67	3.62
	0	5.35	1.46	3.13	4.93	1.60	3.44	4.54	1.72	3.73
	5	6.32	1.47	3.15	5.70	1.63	3.52	5.29	1.76	3.80

PRODUCTS

Freezing	Cold Storage	Ambient Temp. Range: -7 ~+43°C			Evaporating Temp. Range: -45~-5°C			Power Supply: 1, 220V, 50Hz		
		Ambient Temp. 32°C			Ambient Temp. 38°C			Ambient Temp. 43°C		
★R404A/R507/R448/R449	Evaporating Temp.	Capacity (kW)	Power input (kW)	Current (A)	Capacity (kW)	Power input (kW)	Current (A)	Capacity (kW)	Power input (kW)	Current (A)
UF-RH860SFJ	-45	0.27	0.67	3.25	0.24	0.73	3.47	0.23	0.78	3.68
	-40	0.43	0.70	3.37	0.39	0.76	3.60	0.37	0.82	3.82
	-35	0.59	0.73	3.44	0.54	0.79	3.68	0.52	0.85	3.90
	-30	0.71	0.75	3.53	0.65	0.82	3.77	0.62	0.88	4.00
	-25	0.91	0.78	3.64	0.84	0.85	3.89	0.80	0.92	4.12
	-20	0.96	0.81	3.78	0.89	0.88	4.04	0.84	0.94	4.28
	-15	1.23	0.84	3.93	1.14	0.92	4.20	1.08	0.98	4.45
	-10	1.40	0.87	4.09	1.29	0.95	4.37	1.22	1.02	4.63
	-5	1.56	0.91	4.29	1.44	0.99	4.59	1.37	1.06	4.86
UF-RH1160SFJ	-45	0.46	0.99	6.43	0.45	1.05	6.57	0.41	1.10	6.70
	-40	0.61	1.03	6.53	0.53	1.09	6.68	0.49	1.14	6.81
	-35	0.79	1.07	6.65	0.65	1.13	6.81	0.58	1.18	6.94
	-30	0.98	1.12	6.78	0.79	1.18	6.96	0.69	1.23	7.08
	-25	1.20	1.17	6.93	0.98	1.23	7.13	0.81	1.28	7.25
	-20	1.44	1.23	7.09	1.19	1.29	7.32	0.96	1.33	7.43
	-15	1.71	1.28	7.27	1.35	1.35	7.52	1.12	1.39	7.64
	-10	1.99	1.34	7.47	1.42	1.42	7.75	1.30	1.45	7.86
	-5	2.30	1.40	7.69	1.49	1.49	7.99	1.50	1.52	8.10

PRODUCTS

Freezing	Cold Storage	Ambient Temp. Range: -7 ~+43°C			Evaporating Temp. Range: -45~-5°C			Power Supply: 3, 380V, 50Hz		
		Ambient Temp. 32°C			Ambient Temp. 38°C			Ambient Temp. 43°C		
★R404A/R507/R448/R449	Evaporating Temp.	Capacity (kW)	Power input (kW)	Current (A)	Capacity (kW)	Power input (kW)	Current (A)	Capacity (kW)	Power input (kW)	Current (A)
UF-NRH1580SFJ	-45	0.74	1.02	2.51	0.69	1.11	2.69	0.65	1.20	2.84
	-40	0.88	1.09	2.56	0.81	1.19	2.74	0.77	1.27	2.90
	-35	1.07	1.16	2.63	0.99	1.26	2.81	0.94	1.36	2.97
	-30	1.32	1.24	2.70	1.22	1.34	2.89	1.16	1.44	3.06
	-25	1.62	1.31	2.79	1.50	1.43	2.98	1.42	1.53	3.15
	-20	1.89	1.39	2.88	1.83	1.52	3.08	1.74	1.63	3.26
	-15	2.40	1.48	2.99	2.21	1.61	3.20	2.10	1.73	3.39
	-10	2.87	1.56	3.11	2.65	1.70	3.32	2.51	1.83	3.52
	-5	3.40	1.65	3.24	3.14	1.80	3.46	2.98	1.93	3.67

PRODUCTS

Freezing	Cold Storage	Ambient Temp. Range: -7 ~+43°C			Evaporating Temp. Range: -40~-5°C			Power Supply: 1, 220V, 50Hz		
		Ambient Temp. 32°C			Ambient Temp. 38°C			Ambient Temp. 43°C		
★ R22	Evaporating Temp.	Capacity (kW)	Power input (kW)	Current (A)	Capacity (kW)	Power input (kW)	Current (A)	Capacity (kW)	Power input (kW)	Current (A)
UF-RH860SFJ	-40	0.35	0.59	3.29	0.32	0.64	3.51	0.31	0.68	3.72
	-35	0.44	0.63	3.39	0.41	0.69	3.62	0.39	0.74	3.84
	-30	0.56	0.68	3.50	0.52	0.74	3.75	0.49	0.79	3.97
	-25	0.71	0.73	3.63	0.65	0.79	3.88	0.62	0.85	4.11
	-20	0.89	0.78	3.76	0.82	0.85	4.02	0.78	0.91	4.26
	-15	1.10	0.83	3.90	1.01	0.90	4.17	0.96	0.97	4.42
	-10	1.34	0.89	4.05	1.24	0.96	4.33	1.17	1.04	4.59
	-5	1.60	0.94	4.21	1.48	1.03	4.50	1.40	1.10	4.77
UF-RH1160SFJ	-40	0.58	0.64	6.37	0.53	0.70	6.81	0.51	0.75	7.21
	-35	0.78	0.70	6.42	0.72	0.76	6.86	0.69	0.82	7.27
	-30	1.01	0.77	6.50	0.93	0.83	6.95	0.88	0.90	7.36
	-25	1.25	0.84	6.61	1.15	0.92	7.06	1.09	0.98	7.48
	-20	1.51	0.94	6.74	1.39	1.01	7.21	1.32	1.09	7.63
	-15	1.79	1.03	6.90	1.65	1.12	7.38	1.56	1.20	7.81
	-10	2.08	1.13	7.09	1.92	1.23	7.58	1.82	1.32	8.03
	-5	2.40	1.25	7.30	2.21	1.36	7.80	2.10	1.46	8.27

PRODUCTS

Freezing	Cold Storage	Ambient Temp. Range: -7 ~+43°C			Evaporating Temp. Range: -40~-5°C			Power Supply: 3, 220V, 50Hz		
		Ambient Temp. 32°C			Ambient Temp. 38°C			Ambient Temp. 43°C		
★ R22	Evaporating Temp.	Capacity (kW)	Power input (kW)	Current (A)	Capacity (kW)	Power input (kW)	Current (A)	Capacity (kW)	Power input (kW)	Current (A)
UF-RH1580SFJ	-40	0.91	1.32	2.77	0.84	1.44	2.96	0.80	1.54	3.14
	-35	1.19	1.36	2.83	1.10	1.48	3.03	1.04	1.59	3.20
	-30	1.48	1.44	2.86	1.36	1.57	3.06	1.30	1.68	3.24
	-25	1.88	1.54	2.93	1.73	1.68	3.13	1.65	1.80	3.32
	-20	2.29	1.62	3.01	2.11	1.76	3.22	2.01	1.89	3.41
	-15	2.74	1.72	3.09	2.53	1.87	3.30	2.40	2.01	3.50
	-10	3.23	1.82	3.20	2.98	1.98	3.42	2.83	2.13	3.62
	-5	3.77	1.94	3.33	3.48	2.11	3.56	3.30	2.27	3.77

Freezing		Ambient Temp. Range: -7 ~+43°C			Evaporating Temp. Range: -40~-5°C			Power Supply: 3, 220V, 50Hz		
		Ambient Temp. 32°C			Ambient Temp. 38°C			Ambient Temp. 43°C		
★ R22	Evaporating Temp.	Capacity (kW)	Power input (kW)	Current (A)	Capacity (kW)	Power input (kW)	Current (A)	Capacity (kW)	Power input (kW)	Current (A)
UF-RH2280SFJ	-40	1.12	1.20	3.36	1.03	1.31	3.59	0.98	1.40	3.81
	-35	1.39	1.29	3.50	1.28	1.40	3.74	1.22	1.51	3.96
	-30	1.76	1.39	3.71	1.62	1.51	3.97	1.54	1.63	4.20
	-25	2.21	1.53	3.96	2.04	1.67	4.23	1.94	1.79	4.48
	-20	2.75	1.70	4.23	2.54	1.85	4.52	2.41	1.99	4.79



THANKS
